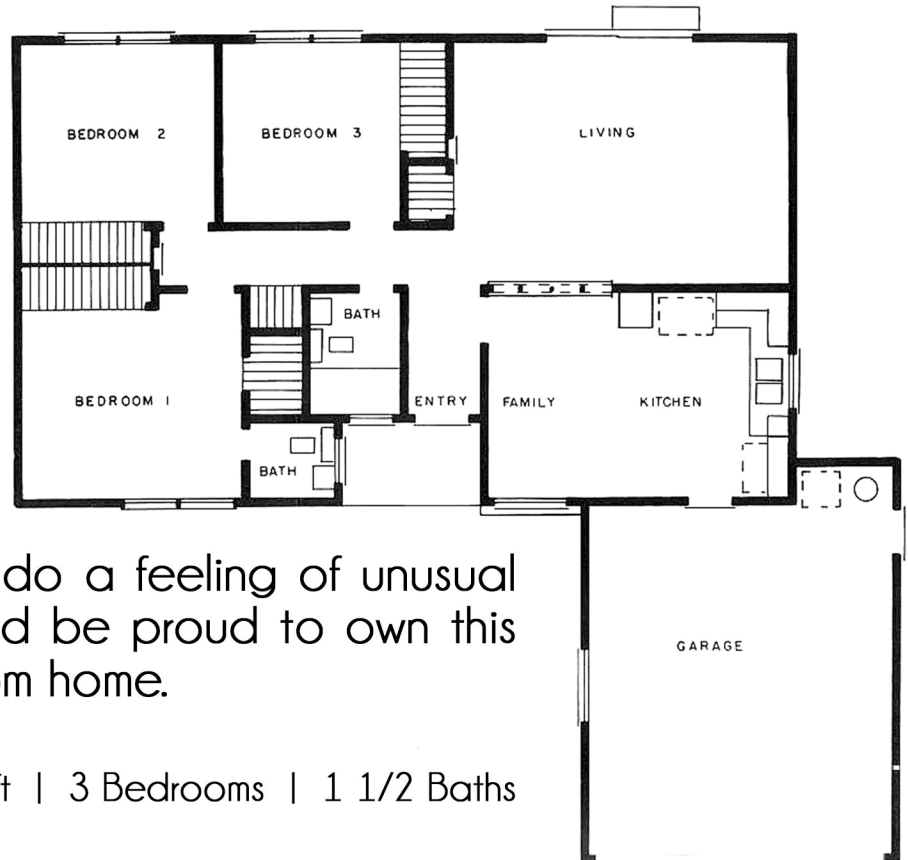


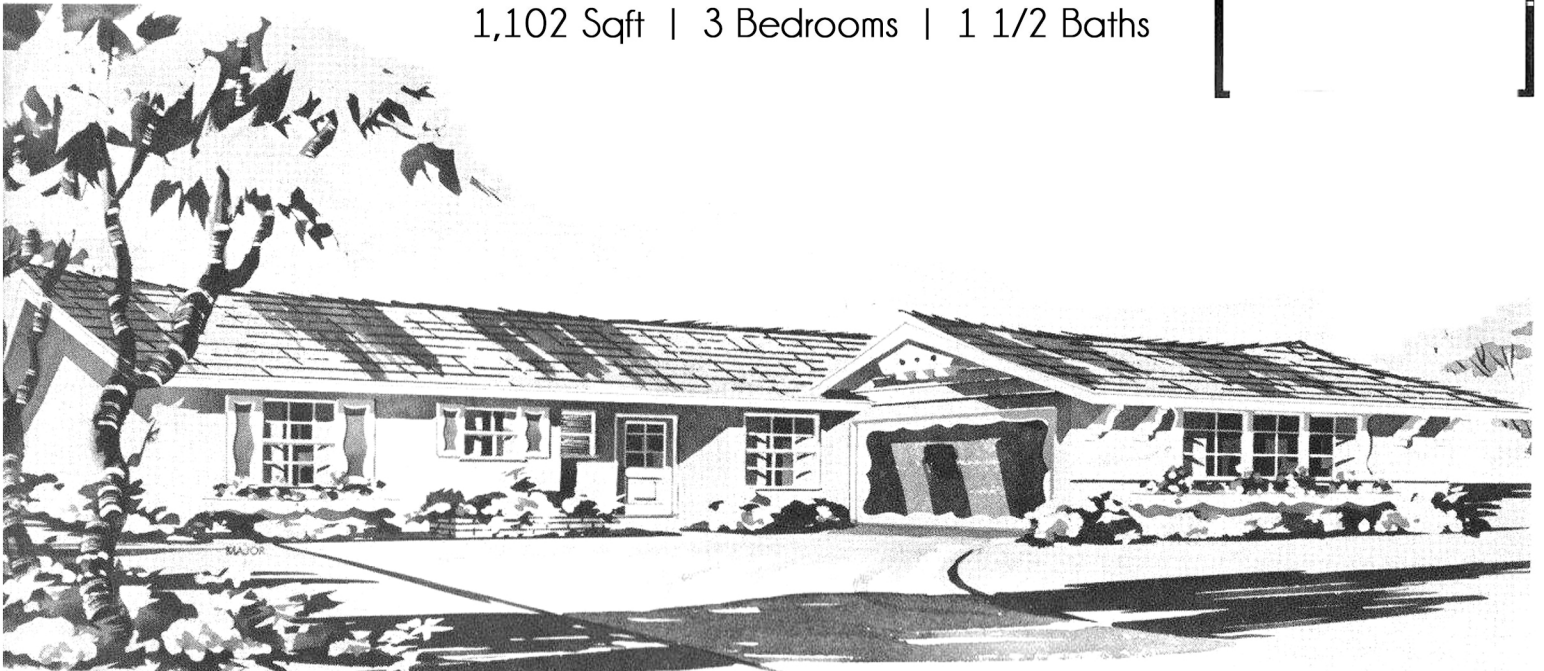
# EASTGATE LIDO

TEAM TACKNEY  
GMT REAL ESTATE II

A refreshingly different California Modern style home with floor plan No. 1. Its pastel tinted stucco exterior provides a colorful background for the attractive large windows, decorative shutters, planters and recessed front entry. Wide overhang eaves and a flaired roof line give the Lido a feeling of unusual spaciousness. Any family would be proud to own this efficiently arranged 3-bedroom home.



1,102 Sqft | 3 Bedrooms | 1 1/2 Baths



LIDO